

# **Speed & Road Safety Review Post Monitoring**

**Drumbo, Oxford Road 3 & Oxford Road 29**

**Plattsville, Oxford Road 8 (Albert Street)**

**Bright, Oxford Road 8 & Oxford Road 22**

**Presentation to Township of Blandford-Blenheim Council**

**February 15, 2023**

Frank Gross, Oxford County  
Manager of Transportation and Waste Management Services

# Drumbo Traffic Calming Implementations

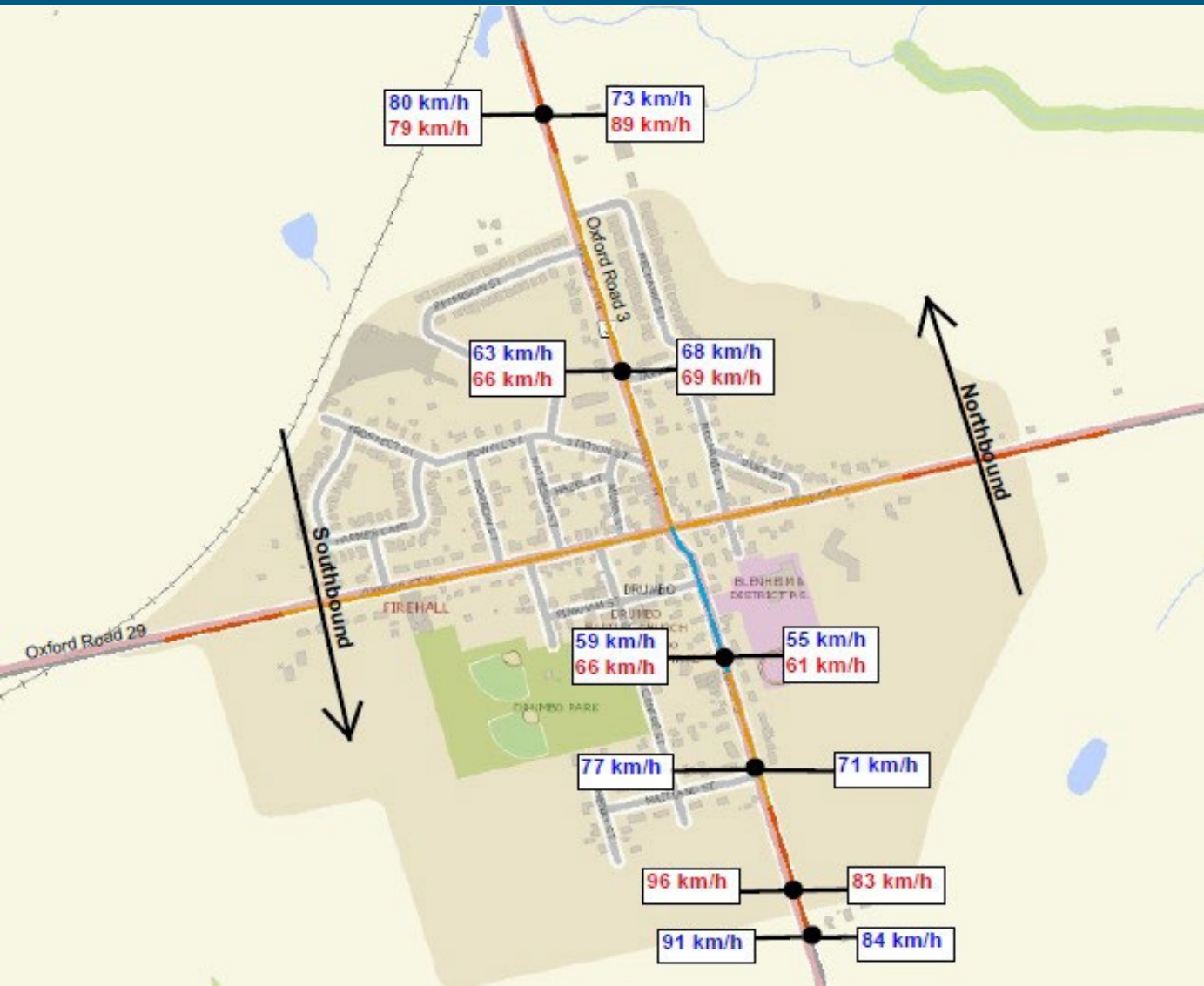
## Historical Findings (2019)

- Marginally excessive speeds at approaches
- Speeds within village not excessive

## Traffic Calming Implementation Measures

- 60km/hr transition zone adjusted at south limit (July 2019)
- PXOs installed - Oxford St at Matheson St & Mechanics St (2020)

# Pre/Post Speed Data – OR 3



Legend  
Speed Zone

- 40 Km/h
- 50 Km/h
- 60 Km/h
- 80 Km/h

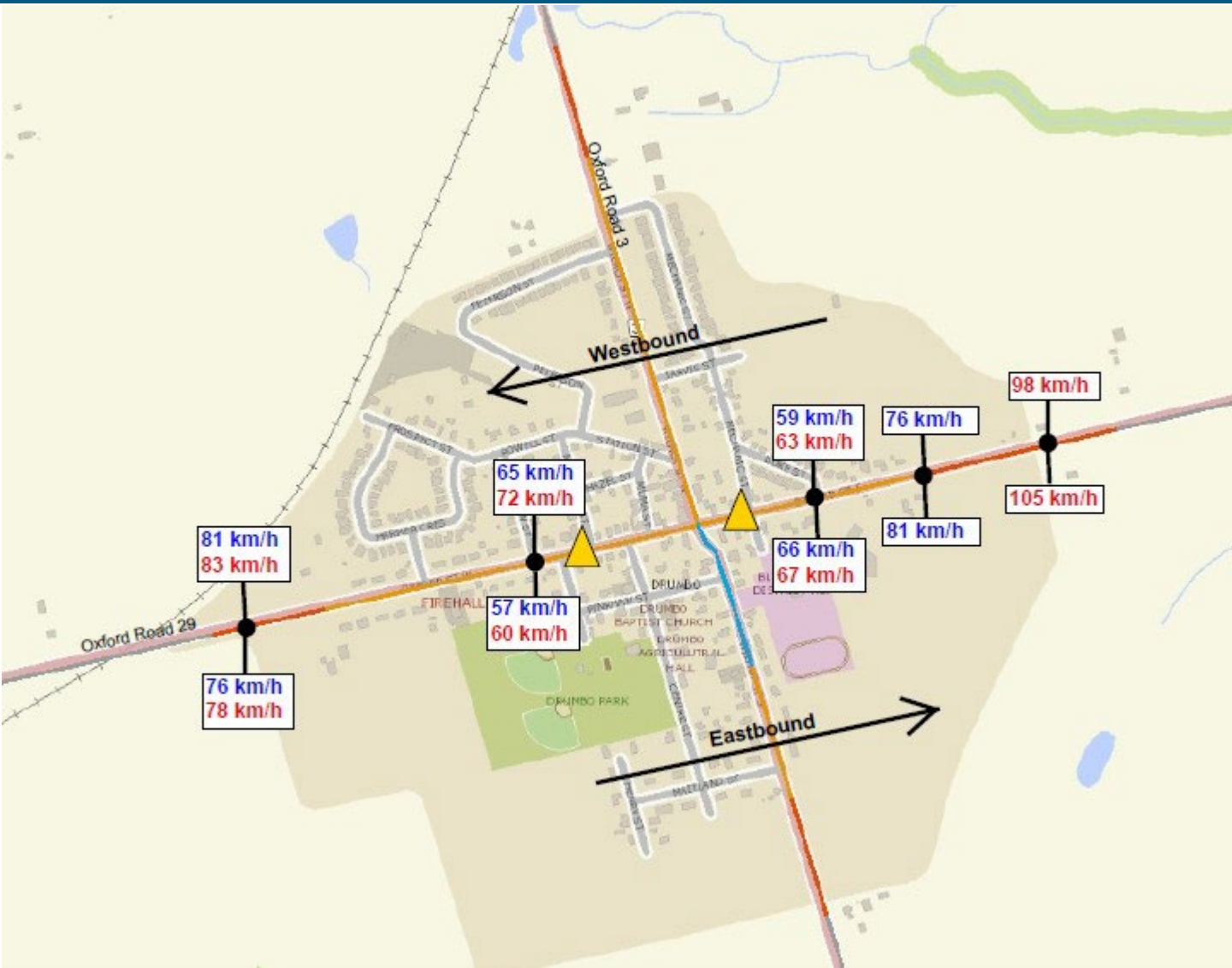
85th% Speed

2018

2020



# Pre/Post Speed Data – OR 29



## Legend

### Speed Zone

- 40 Km/h
- 50 Km/h
- 60 Km/h
- 80 Km/h

### 85th% Speed

2018

2020



# Drumbo Post Monitoring Review Findings

- **Excessive speeds at approaches – incoming/outgoing**
- **Excessive speeds WB after all-way stop**
- **Excessive speeds through 40km/hr school zone on Wilmot St**
- **Speed transition zones at approaches are ineffective in reducing speeds**

# Posted Speed Limits – OR 3

SEGMENT	POSTED SPEED (KM/H)	TAC RECOMMENDED POSTED SPEED* (KM/H)	DIFFERENCE (KM/H)	OXFORD COUNTY RECOMMENDED POSTED SPEED (KM/H)
Twp Road 6 and 50m south of Maitland Street – Rural	60/80	80	+20/0	80
50m south of Maitland Street and Taylor Street – Urban	40/50	60	+20/+10	50
Taylor Street and Twp Road 8 – Rural	60/80	80	+20/0	80

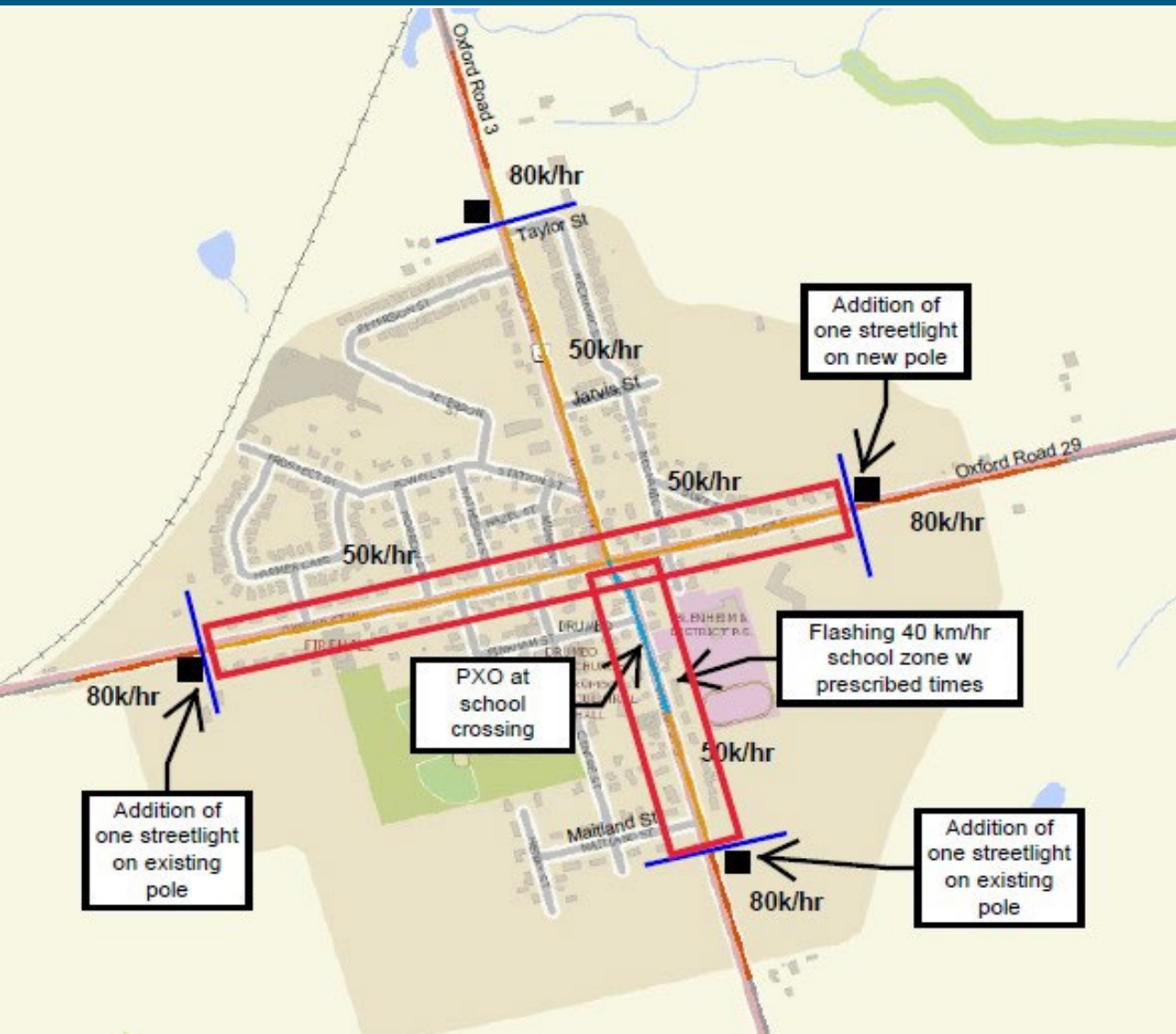
\*TAC Canadian Guideline for Establishing Posted Speed Limits (2009)

# Posted Speed Limits – OR 29

SEGMENT	POSTED SPEED (KM/H)	TAC RECOMMENDED POSTED SPEED* (KM/H)	DIFFERENCE (KM/H)	OXFORD COUNTY RECOMMENDED POSTED SPEED (KM/H)
Goble Road and 630m west of OR 3 – Rural	60/80	80	+20/0	80
630m west of OR 3 and 405m east of OR 3 – Urban	50	60	+10	50
405m east of OR 3 and Motheral Road – Rural	60/80	80	+20/0	80

\*TAC Canadian Guideline for Establishing Posted Speed Limits (2009)

# Drumbo Recommendations – Immediate



## Legend

### Speed Zone

- 40 Km/h
- 50 Km/h
- 60 Km/h
- 80 Km/h

Electronic Speed Feedback Sign

Adjusted limit of speed zone

Community Safety Zone





# Plattsville Traffic Calming Implementations

## Historical Findings (2016)

- Excessive speeds at east end

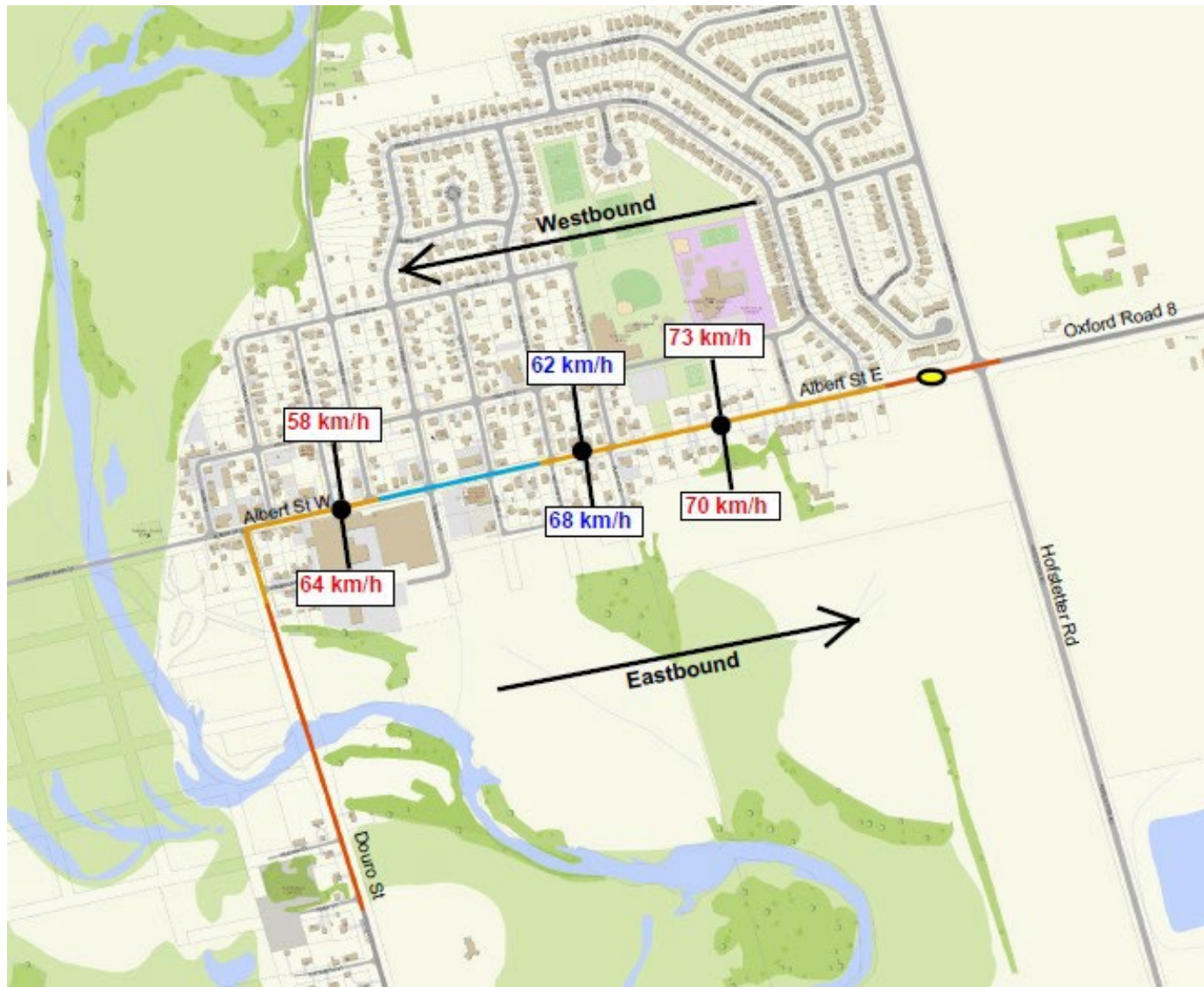
## Traffic Calming Implementation Measures

- 10m raised centre island installed, east end (2016)
- Street lighting extended to illuminate traffic island (2016)

# Plattsville Raised Centre Island



# Pre/Post Speed Data



## Legend

### Speed Zone

- 40 Km/h
- 50 Km/h
- 60 Km/h
- 80 Km/h

### 85th% Speed

- 2016
- 2020

- Raised centre island



# Plattsville Post Monitoring Review Findings

- **Traffic island had minimal impact on reducing speeds**
- **Vehicles able to maintain speed through traffic island by encroaching bike lanes**
- **Excessive speeds in 50km/hr zone at east end**

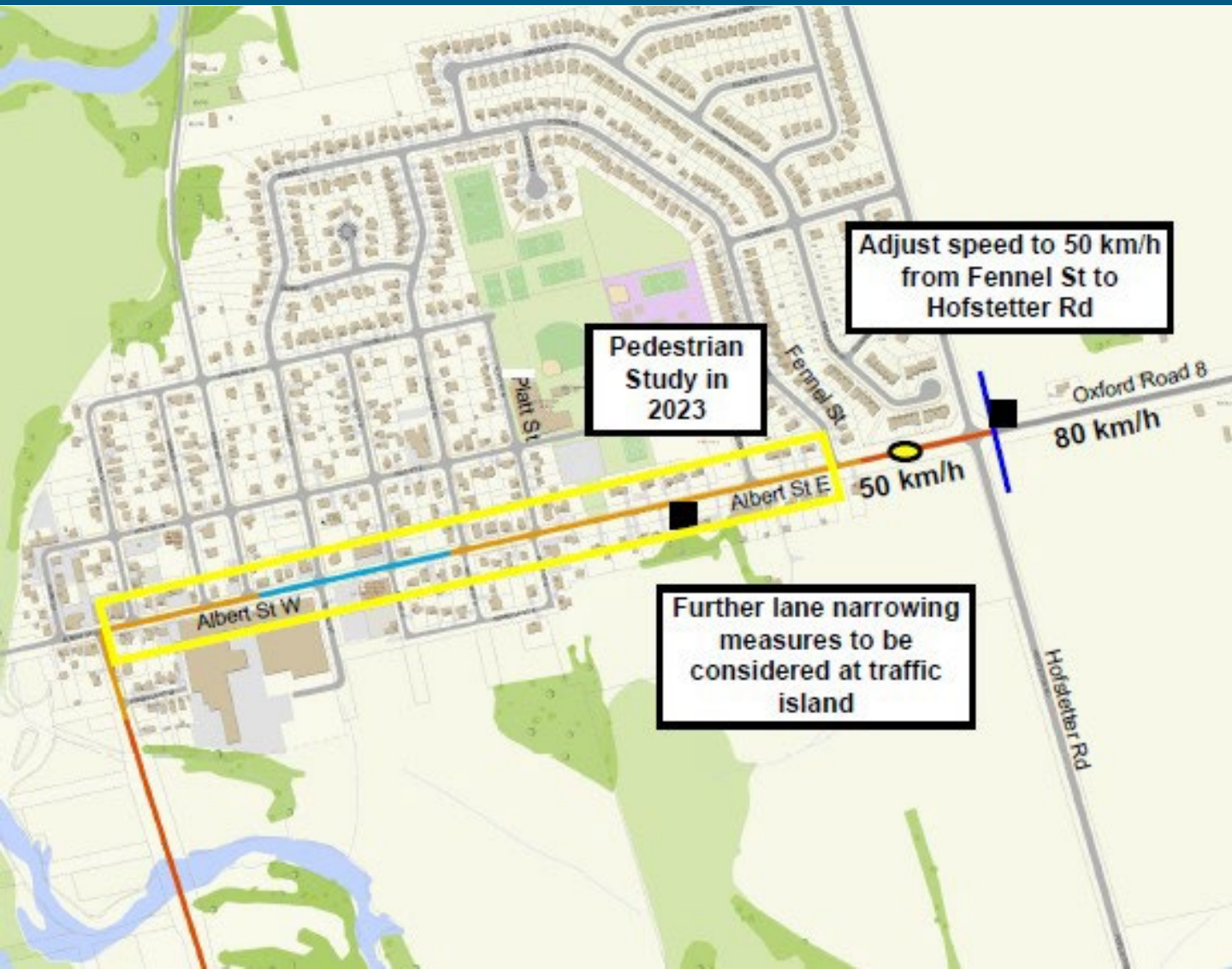
# Posted Speed Limits – OR 8

SEGMENT	POSTED SPEED (KM/H)	TAC RECOMMENDED POSTED SPEED* (KM/H)	DIFFERENCE (KM/H)	OXFORD COUNTY RECOMMENDED POSTED SPEED (KM/H)
Douro Street and Hofstetter Road – Urban	50 <sup>1</sup> /60	60	+10/0	50
Hofstetter Road and 350m east of OR 3 – Rural	80	80	0	80

1 A “40 km/h when flashing” zone is present in this segment of OR 8 fronting Plattsville Christian School.

\*TAC Canadian Guideline for Establishing Posted Speed Limits (2009)

# Plattsville Recommendations – Immediate



## Legend

### Speed Zone

- 40 Km/h
- 50 Km/h
- 60 Km/h
- 80 Km/h

● Raised centre island

■ Electronic Speed Feedback Sign

▬ Adjusted limit of speed zone

▭ Potential Community Safety Zone



# Bright Traffic Calming Implementations

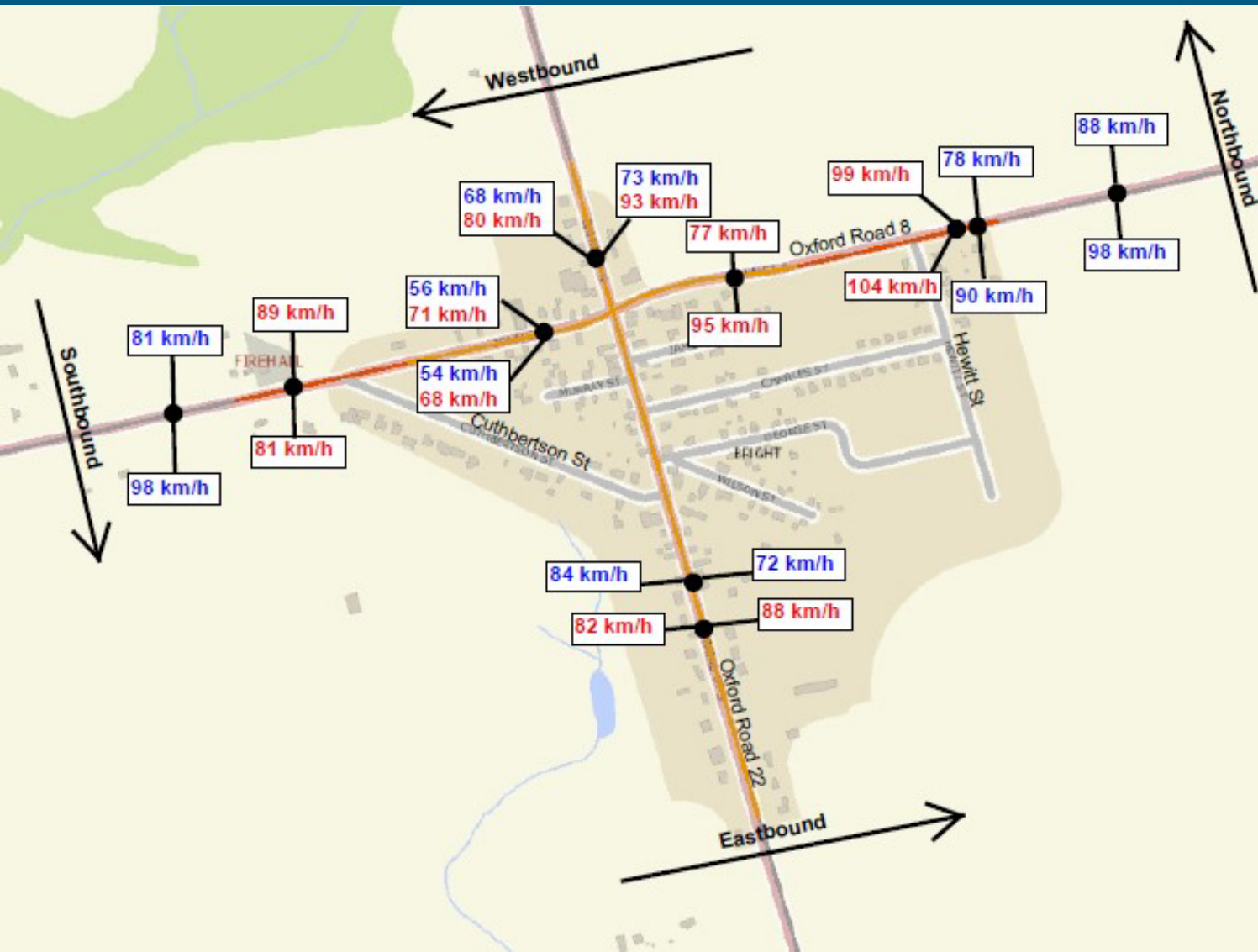
## Historical Findings

- Excessive speeds at east/west approaches
- Marginally excessive speeds at north/south approaches

July 2019

- Adjusted speed zones on OR 8 to limits of built up areas

# Pre/Post Speed Data



## Legend

### Speed Zone

- 50 Km/h
- 60 Km/h
- 80 Km/h

### 85th% Speed

- 2018
- 2020





# Bright Post Monitoring Review Findings

- **Excessive speeds at approaches**
- **Excessive speeds EB & WB after all-way stop**

# Posted Speed Limits – OR 8

SEGMENT	POSTED SPEED (KM/H)	TAC RECOMMENDED POSTED SPEED* (KM/H)	DIFFERENCE (KM/H)	OXFORD COUNTY RECOMMENDED POSTED SPEED (KM/H)
215m west of Cuthbertson Street to 125m east of Hewitt Street – Urban	50/60	60	+10/+20	50

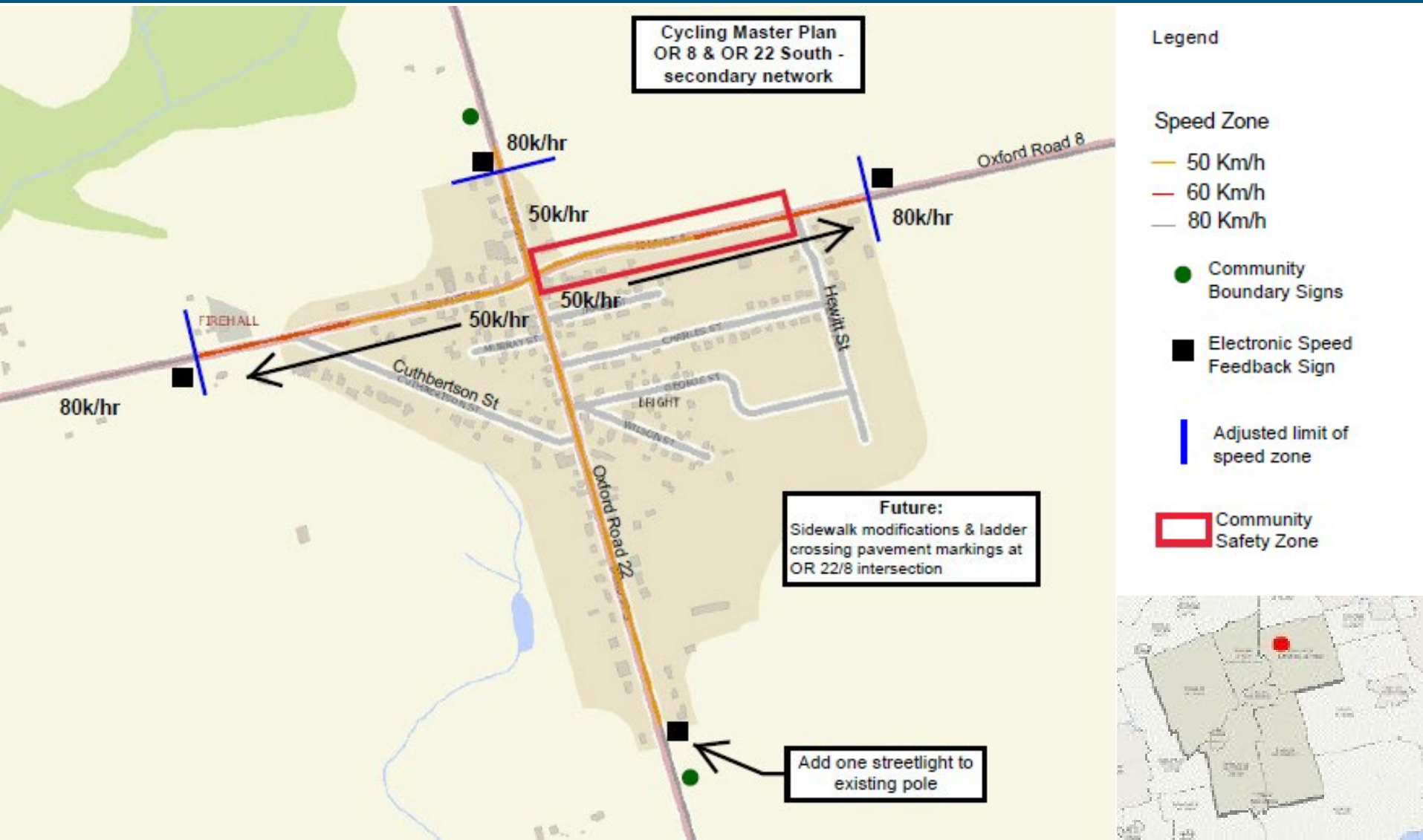
\*TAC Canadian Guideline for Establishing Posted Speed Limits (2009)

# Posted Speed Limits – OR 22

SEGMENT	POSTED SPEED (KM/H)	TAC RECOMMENDED POSTED SPEED* (KM/H)	DIFFERENCE (KM/H)	OXFORD COUNTY RECOMMENDED POSTED SPEED (KM/H)
865m south of OR 8 to 200m north of OR 8 – Urban	50	60	+10	50

\*TAC Canadian Guideline for Establishing Posted Speed Limits (2009)

# Bright Recommendations – Immediate



# Future Implementation Measures

- **Physical features at village limits**
  - Centre traffic island
  - Lateral lane shifts
  - Flexible centerline delineators
- **Curb extensions (bump outs)**
- **Ongoing Police enforcement and speed data sharing**
- **Automated speed enforcement in school zones and CSZ**

# Next Steps

- **Public Communication (mailouts)**
- **Report to County Council – March 22, 2023**
- **Implementation of immediate measures**
  - ▶ Speed zone adjustments
  - ▶ Installation of speed feedback signs
  - ▶ Addition of street lighting
  - ▶ Community Safety Zone implementation (where warranted)
- **Post Monitoring**

# Speed & Road Safety Review Post Monitoring

**THANK YOU**