



SCOR EDC Member Update

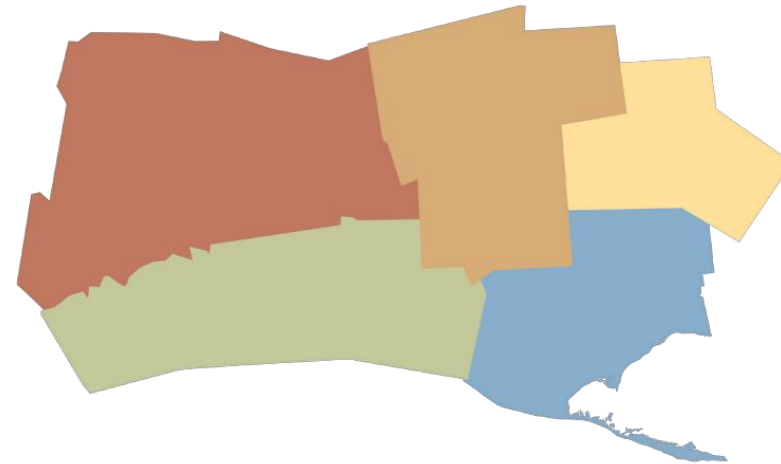
OXFORD 2024- August





REGIONAL ECONOMIC DEVELOPMENT CORPORATION

NORFOLK COUNTY
COUNTY OF BRANT
OXFORD COUNTY
MIDDLESEX COUNTY
ELGIN COUNTY





Our Focus

Created in 2010 as a result of the decline in the tobacco industry

Purpose: to diversify regional economies and prepare for prosperous future.

SCOR EDC came together because councils of the day recognized that a strong member-based partnership would benefit their individual counties and the region in the long term.

- Larger regional issues that have an impact on the region but would be difficult for one municipality to tackle on their own
- Shared resources; for more efficient use of tax payer dollars
- Strong voice for advocacy and moving forward large issues and opportunities





Regional Strategy

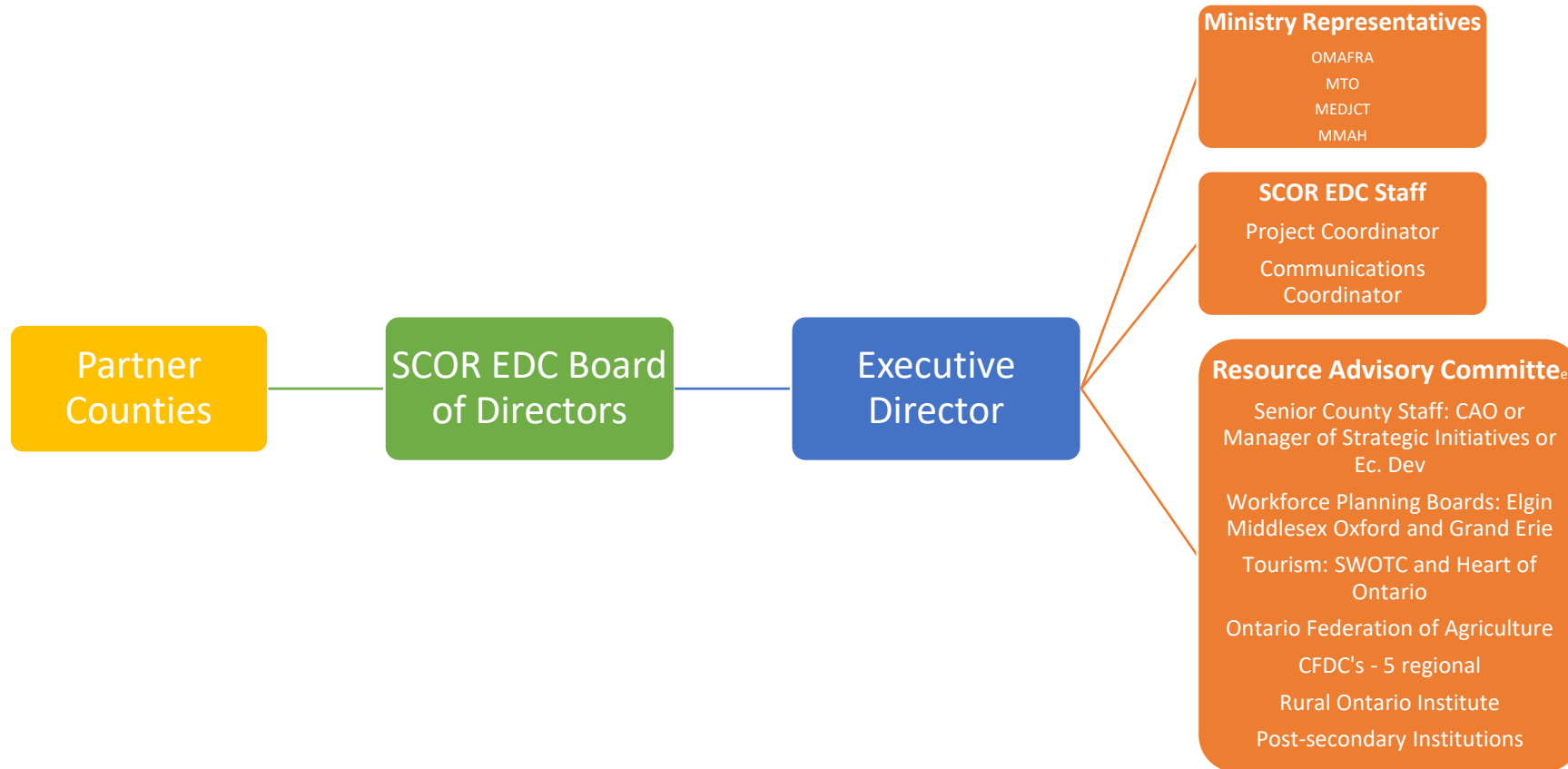
Priorities

- Infrastructure required to support economic development
- human capital to support economic development
- Key sector focus is agriculture and agri-food



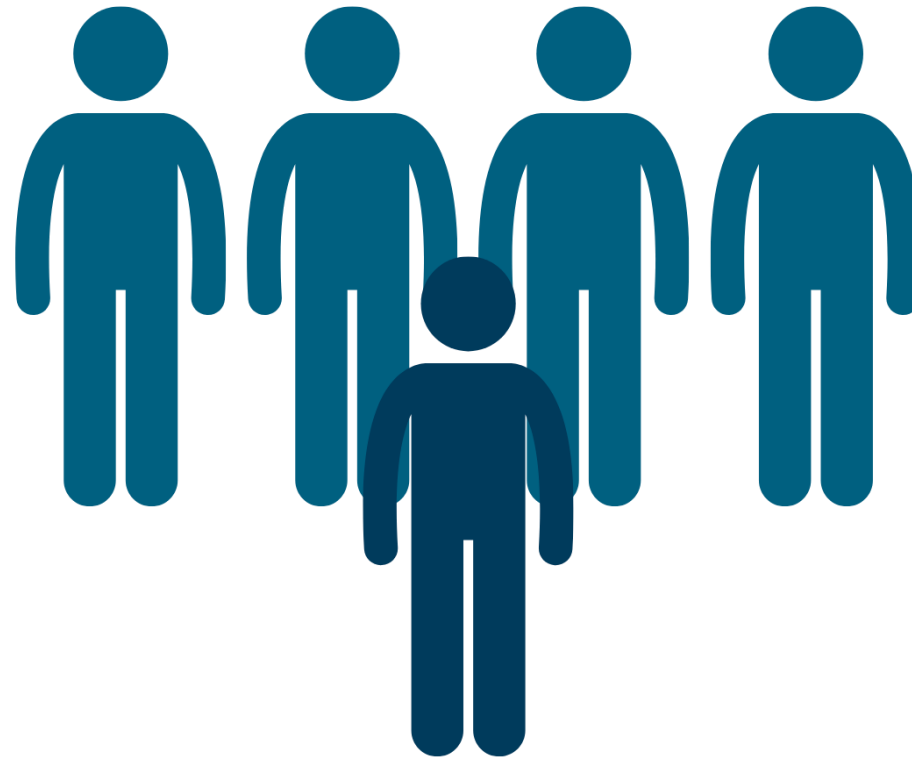


SCOR EDC STRUCTURE AND STAFF / COMMITTEE RESOURCES



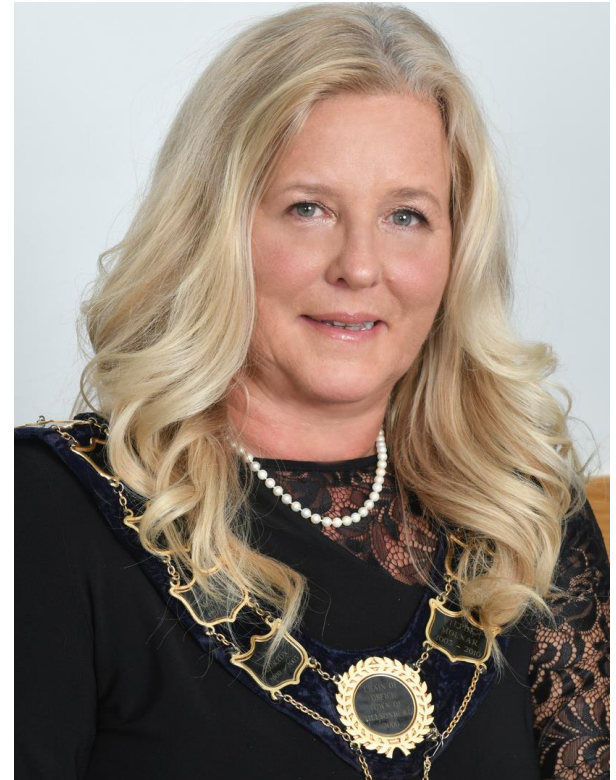


Right-sized One in five





SCOR EDC Representatives





About SCT



- Member systems represent a population of **1M+**
- connect geographies to serve a population of **2M+** and a land area of **21,000 km²**
- Of the 2M+ in the SCT's service area, **375,000+** are over the age of **65**
- and nearly **200,000** are **low-income**
- Ridership is increasing significantly
- 2021 SCT ridership was **38,066 riders**. 2023, ridership was **119,006** – an increase of **213%**
- Between 2021 and 2023, all SCT members have experienced ridership growth, ranging from an increase of **41%** to **1299%**
- As of June 2024, ridership for the first half of 2024 is **64,381**





Recent Projects and Initiatives

Infrastructure: Inter-community transit



Basic Information

Southwest Community Transit (SCT) was formed in early 2020 following the Province of Ontario's launch of the Community Transportation Grant Program (CTGP).

Counties Served: Brant, Grey, Lambton, Middlesex, Norfolk, Oxford, Perth

of Municipal Transit Services Represented: 9

of Fixed Route/Hybrid Transit Services: 7

of On-Demand Transit Services: 2

of CTGP Recipients: 8

2022 Ridership: 57,000+



Key Benefits of SCT

- Knowledge and resource sharing
- Consistent messaging across all regions
- Alignment of routing where possible
- Coordination of marketing and promotions to leverage economies of scale

Executive Committee
(Elected Official / CAO from each member)

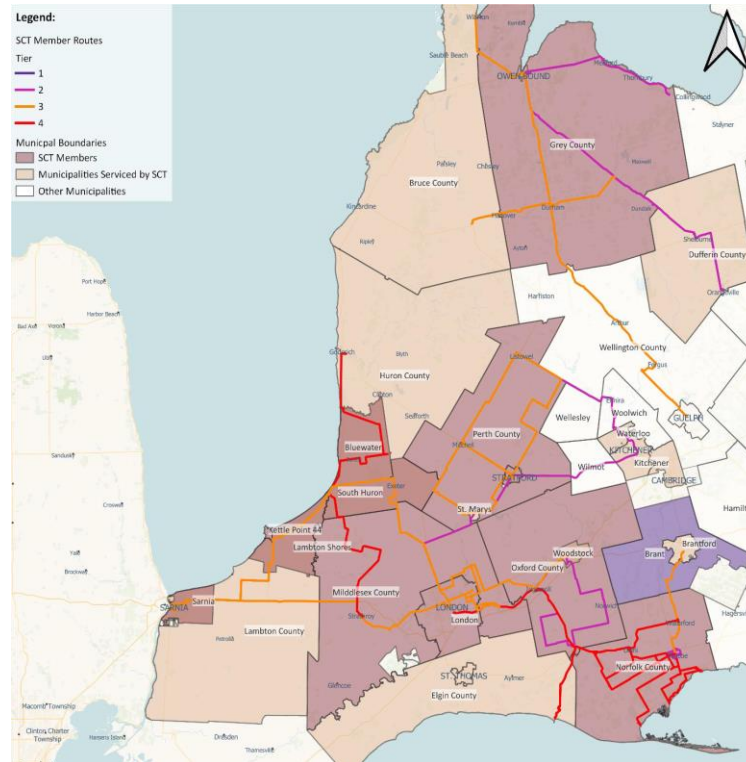
Technical Committee
(Transit Operations Staff from each member)

Stakeholder Committee
(Libraries, post-secondary institutions, hospitals, Workforce Planning Boards, etc.)

Successes of SCT

- Successfully developed inter-community transit network across Southwestern Ontario
- Recently awarded Rural Transit Solutions Funding from Federal Government to conduct Needs Analysis
- Collaborated with local Workforce Planning Boards to integrate transit routes on job board

WWW.RIDE-SCT.CA





Relationships and Collaboration

12 meetings with MTO minister and staff regarding transit/transportation
MTO holds SCT model up as an example of best practices





Short line rail: important infrastructure

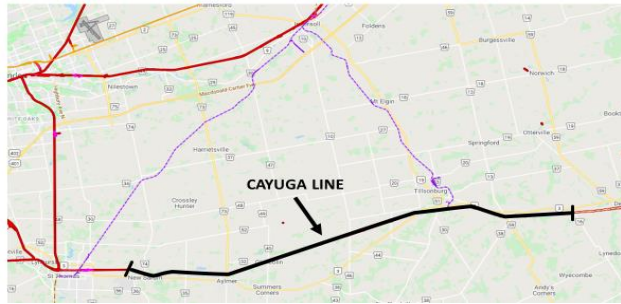


Infrastructure: rail



- BUILDING STRONG SUPPLY CHAINS
- MANUFACTURING ACROSS THE REGION
- AGRICULTURAL SECTOR SUPPORT
- FREIGHT MULTI-MODAL DEVELOPMENT ACROSS REGION SUPPORTING BR&E

Cayuga Rail Location



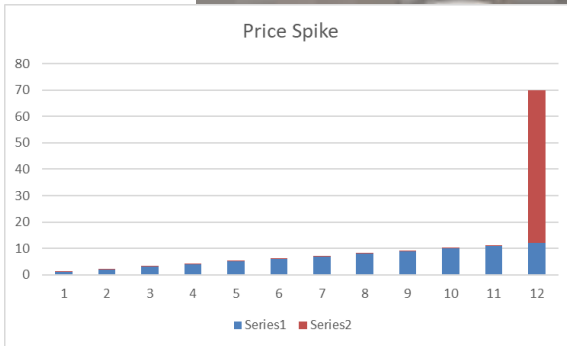
Economic Impact Assessment – Survey

The purpose of the survey was to assess the economic impact of the Cayuga Rail Subdivision on the economy of the South Central Ontario Region.

- Total companies affected - 7
- Total number of employees (FTE) - 392
- Total annual revenue affected- ~170 million (n=4)
- Logistics costs increase - \$1,450,000.00
- Total Annual Revenue loss - \$7,910,00.00



Infrastructure: Energy





Infrastructure: Housing



Vision, Voice and Leadership





Projects and Initiatives

- Partner project with Workforce Planning Board of Grand Erie focusing on Business HR Toolkit for employee turnover preparedness
- Agriculture sector
- Supply Chain resilience project
- Growth related issues: education-schools needed, satellite college campuses,





Advocacy



- 32 various ministry meetings over the last 12 months
- Invited to speak to the Standing Committee on the Interior on Bill 165
- Direct meetings with Minister of Education





Committees and Support

- Inter-governmental, inter-ministerial committee
- Program Advisory Committee: Fanshawe College Agri-Business Management Program
- Program Advisory Committee: Conestoga College Agricultural Equipment Operator Program
- Input on County of Brant economic development strategy Salute to Brant Business





Long Term Strategic Planning

- Partnership creates immediate value but more importantly cumulative value over time
- Action-oriented organization – with a focus on strategic planning and implementation
- SCOR is widely recognized with a positive reputation as a region
- Ability to tackle projects and issues that are larger in scale than one municipality can take on individually
- Small enough to reach a consensus and move forward on areas of focus
- Ability to attract and leverage funding on a regional scale





The Value of Partnership

- 1 FTE Senior staff
- 2 PTE
- 9 other elected officials
- Access to 18 other senior staff at neighboring municipalities and agencies
- Current comparable salary \$140,000
- Current comparable salary \$25,000 ea
- Access to expertise (18 x \$80,000)= \$1,440,000
- 9 other elected officials= priceless
- Relationships with ministry=priceless

All for membership cost of \$30,000





Thank You!

We have accomplished a great deal as a five county partnership...good neighbours working together for the good of all!

Thank you!

Amy Martin- SCOR EDC Chair of the Board of Directors
amy.martin@norfolkcounty.ca

Kimberly Earls
Kimberly.earls@scorregion.com

