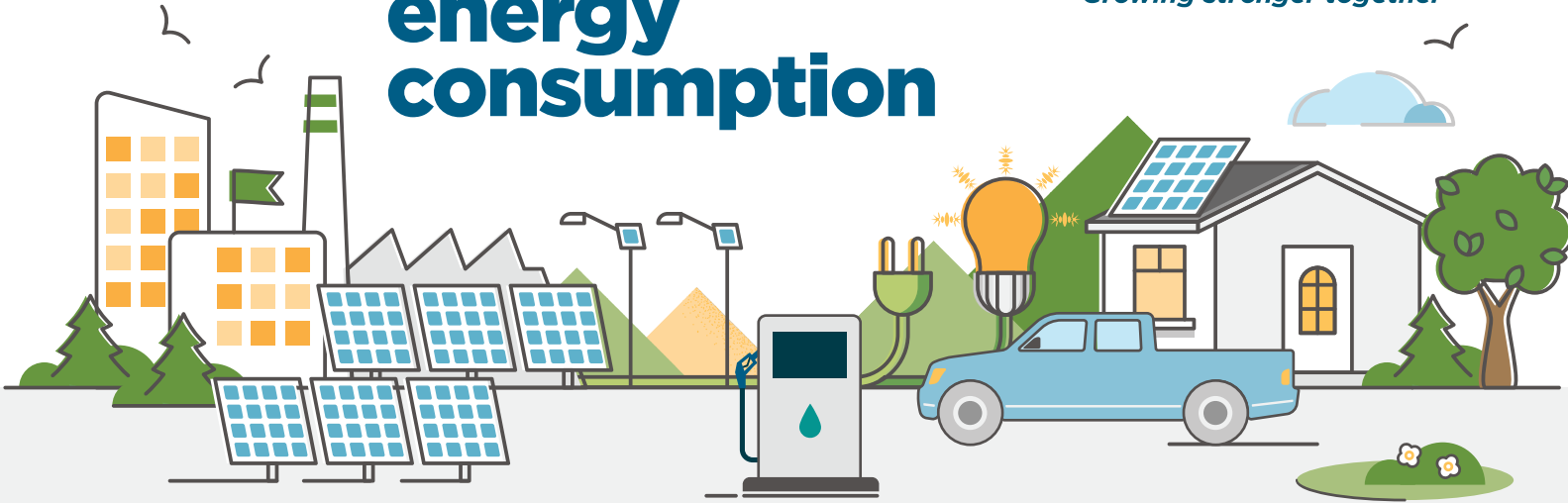


2024 Corporate energy consumption



56.18 million ekWh

Total energy consumed
(facilities and fleet)

↑ 3.9% from 2023

887 thousand equivalent gas litres

Fleet fuel consumed
(unleaded, diesel, CNG, electric, propane)

↑ 14.5% from 2023

5.80 million dollars

Total energy cost
(facilities and fleet)

↓ 1.1% from 2023

Energy use by service area

CORPORATE FACILITIES (47,634 eMWh) | ↑ 2.2%/2023



Buildings
21,891 eMWh

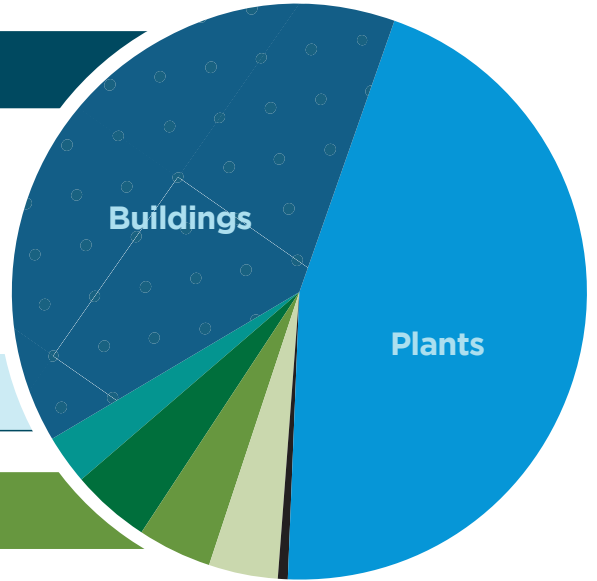


Plants
25,424 eMWh



Minor Assets*
318 eMWh

TOTAL COST: \$4.70 MILLION | ↓ 3.4%/2023



CORPORATE FLEET (8,545 eMWh) | ↑ 14.6%/2023



Commercial
2,287 eMWh



Equipment
2,317 eMWh



Industrial
2,507 eMWh



Paramedical
1,434 eMWh

TOTAL COST: \$1.09 MILLION | ↑ 9.0%/2023

* Minor assets include:
street lighting,
communication
towers, etc.



Facilities area (square metres)

114,906SM

↓ 1.4% from 2023

2015: 93,728 SM



Fleet travel (kilometres)

3.1 million

↑ 9.6% from 2023

2015: 2.74 million km



Water & Wastewater treatment and distribution (megalitres)

29,059^{ML}

↑ 2.9% from 2023

2015: 24,948 ML

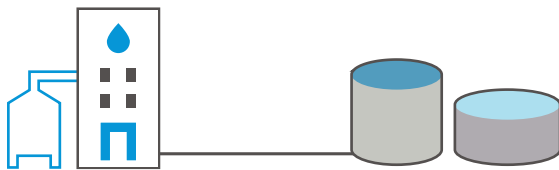


Total greenhouse gas emissions (facilities and fleet)

5,744^{tCO2e}

↑ 3.9% from 2023

2015: 6,223 tCO2e



natural gas

1,459,000 m³

↓ 5.1% from 2023

2015:
1,414,000 m³

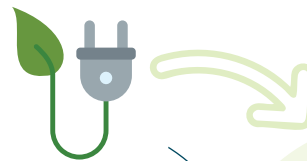


purchased electricity

27,156,600 kWh

↑ 1.8% from 2023

2015:
29,379,600 kWh



renewable energy generated

5,562,000 ekWh

↑ 34.1% from 2023

2015:
1,843,131 ekWh

**\$
revenue from
renewable
energy
\$444,600**