

SITE DATA Apartment Buildings, Stacked Townhouses, Lodging Houses, & Special Population's Accommodations		
Residential (R4-12)	Req'd. / Max. / Min.	Proposed
Proposed Zoned Use	Apartment Dwelling House	Apartment Dwelling House
Lot Area	65m <sup>2</sup> per dwelling unit = 3120m <sup>2</sup> (min)	6505m <sup>2</sup>
Lot Frontage	9.5m (min.)	89.02m
North Interior Side Yard Setback (min.)	6.3m	6.3m
South Interior Side Yard Setback (min.)	7.3m	7.3m
Lot Coverage	35% (max)	14.2%
Building Height	4 storeys	4 storeys
Landscape Open Space	35% (min)	48.6%
Parking	79 (48 units x 1.5 + 10% Visitor Spaces) (1 + 4% B.F. Spaces = 5 Spaces)	79 Spaces (Includes 5 Barrier Free Spaces and 8 Visitor Spaces)

HS 2022-09

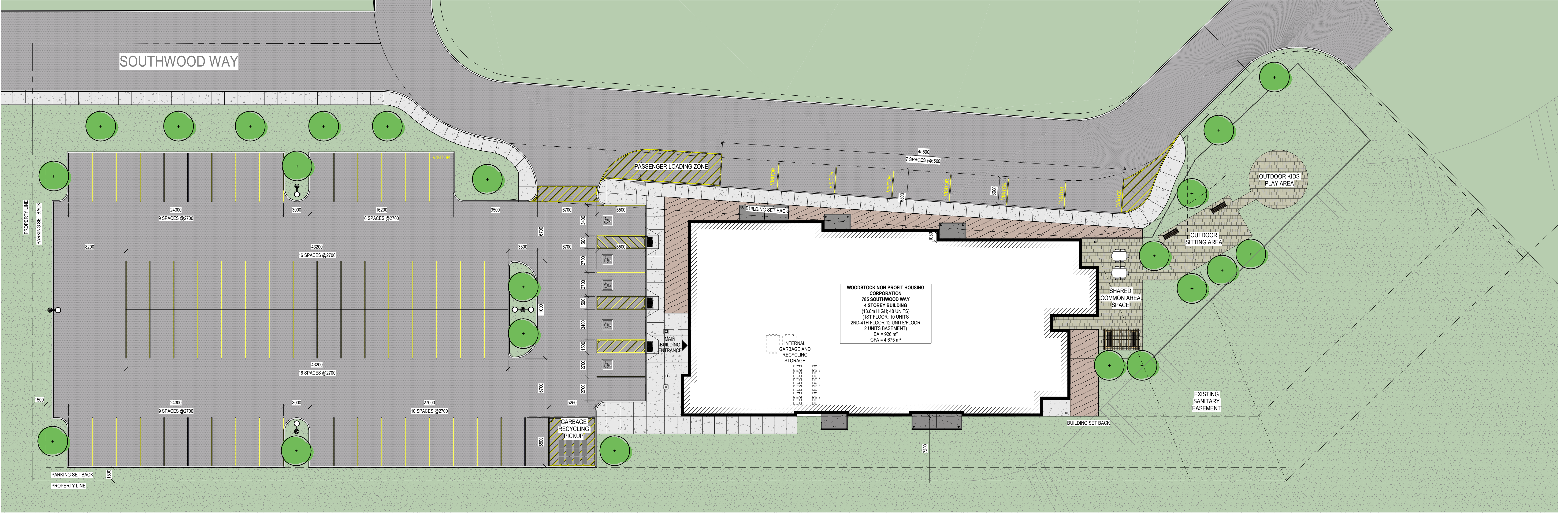
Attachment No. 2 - Proposed Site Plan

NICHOLSON

SHEFFIELD

ARCHITECTS

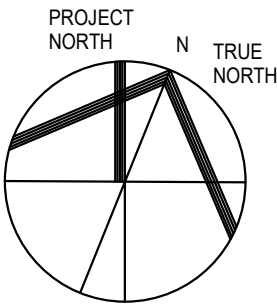
INC.



1

SITE PLAN

1 : 200



As indicated

# Site Plan

Woodstock Non-Profit Housing Corporation